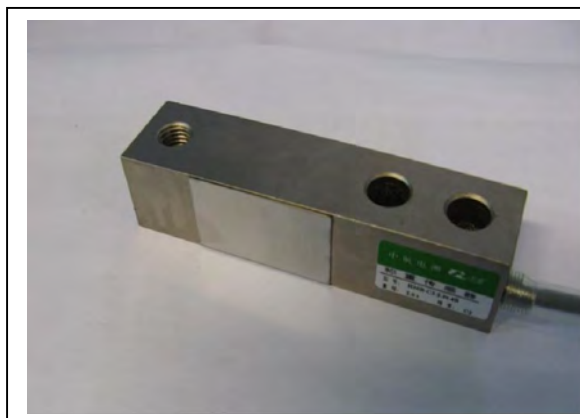




## H30B



- | H30B load cells are available for manifold accurate measurement in the capacities 0.5t~10t and 1K~20K.
- | Alloy steel, potted by adhesive inside, oil-proof, waterproof and anti-corrosion, suitable for all kinds of environments.
- | Single shear beam, low profile and easy installation,
- | Suitable for electronic platform scale, hopper scale, and other electronic weighing devices.

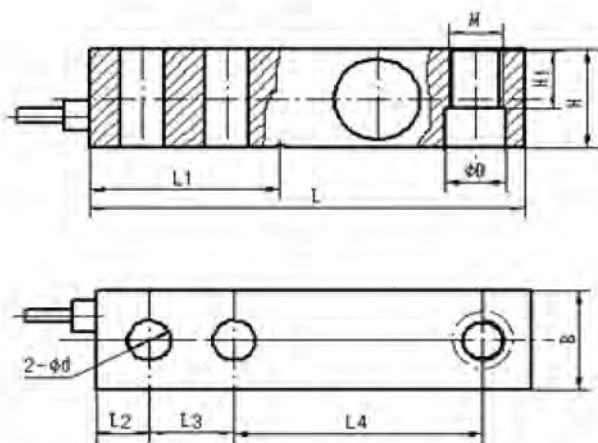
### Accessory

HJ-8-201	HJ-8-203	HJ-8-208	HJ-8-210
HJ-8-213	HJ-8-214	HJ-8-221	HM-8-402

### Specifications:

Capacity	t	0.5/1/1.5/2/2.5/3/5/10	
	Klb	1/1.5/2/2.5/3/4/5/7.5/10/15/20	
Output sensitivity	mV/V	3.0±0.003	2.0±0.002
Combined error	%F.S	±0.05	
Creep	%F.S/30min	±0.03	
Temperature effect on sensitivity	%F.S/10	±0.05	
Temperature effect on zero	%F.S/10	±0.05	
Input resistance		410±30	
Output resistance		352±2	
Insulation resistance	M	5000 (50V)	
Zero balance	%F.S	±1.5	±1
Temperature, compensated		-10~+40	
Temperature, operating		-20~+60	
Excitation, recommended	V	5~12 (DC)	
Excitation, max.	V	18 (DC)	
Safe overload	%F.S	150	
Ultimate overload	%F.S	200	

### Outline Dimensions mm



Capacity	L	H	B	L1	L2	L3	L4	H1	D	d	W
0,5-2t	130	31,8	31,8	54,2	15,8	25,4	76,2	15,8	13,5	13,5	M12x1,75
1K-4K	130	31,8	31,8	54,2	15,8	25,4	76,2	15,8	13,5	13,5	1/2-20UNF
5KSE	130	31,8	31,8	54,2	15,8	25,4	76,2	15,8	13,5	13,5	1/2-20UNF
2,5-5t	171,5	38,1	38,1	77,2	19,1	38,1	95,3	18,8	19,8	19,8	M18x1,5
5-10K	171,5	38,1	38,1	77,2	19,1	38,1	95,3	18,8	19,8	19,8	3/4-16UNF
10t	222,3	50,8	50,8	101,6	25,4	50,8	120,7	25,4	2,6	26,8	M24x2
20K	222,3	50,8	50,8	101,6	25,4	50,8	120,7	25,4	2,6	26,8	1-12UNF

Wiring:  
 · Shielded, 4 conductor cable  
 · Standard cable length: 4m (0.5t-2t)  
 6m (2.5t-10t) (1-20Klb)  
 · Other cable length are available on customers' requests.

