

DHM14H1 Digital Load cell Technical Specification



- ◆ Alloy steel material
- ◆ Column structure, Enable to automatically returned for electronic truck scale, platform scales and other electronic weighing equipment.
- ◆ Protection class IP68, fully sealed welding, anti-oil, waterproof, anti-corrosive , applicable to a variety of environments.

DHM14H1 Digital load cell technical specifications

| | | |
|---|---------------|----------------------------|
| Capacity | t | 10/20/30/40/50 |
| Overall accuracy Level | D | 3000d |
| The maximum resolution of the signal | Bits | 20bit(1.0Hz)(1 M) |
| A / D conversion speed | Times / sec | 256 |
| Measured value output speed | Hz(times/sec) | 75,36,18,9 |
| The cutoff frequency of digital filtering | Hz | 120,40,18,8,4,2,1,0.5,0.25 |
| RS485 communication line length | m | ≤1000 |
| Linearity | % | ±0.02 |
| Effect of Temperature on Output Sensitivity | %F.S/10°C | ±0.011 |
| Effect of Temperature on Zero Output | %F.S/10°C | ±0.014 |
| Communication Interface | | RS485 |
| Baud rate selection | Baud Rate | 4800 9600 19200 38400 |
| Current consumption | mA | 30 |
| Normal operating temperature | °C | -10...+40 |
| Working temperature | °C | -20...+60 |
| Storage temperature | °C | -30...+85 |

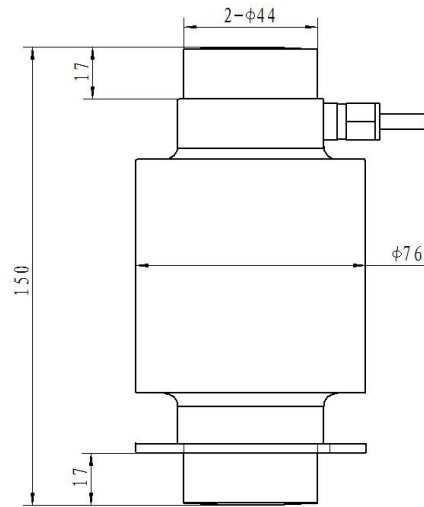
Digital Load cell wiring:

Six-core shielded cable: $\Phi 5.0 \pm 0.2 \text{mm}$

1. Red Line-----Power Positive (V+)
2. Black Line-----Power negative (V-)
3. Blue Line-----T+
4. White Line-----T-
5. Yellow Line-----R+
6. Brown Line-----R-

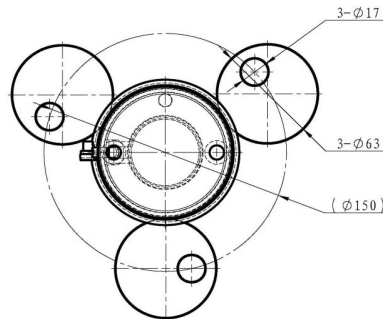
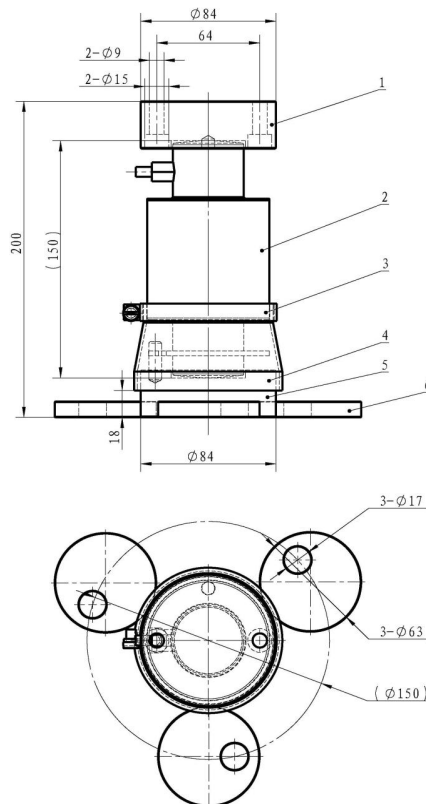


Dimensions mm



Install attachments:

1. The attachment model: HY-14-146
2. Installation diagram:



| Serial No | 1 | 2 | 3 | 4 | 5 | 6 |
|-----------|--------------|-----------|-----------|------------|---------------|-------------------|
| Name | Upper Button | Load Cell | Tube Clip | Dust Cover | Bottom Button | Eccentric washers |
| Quantity | 1 | 1 | 1 | 1 | 1 | 3 |