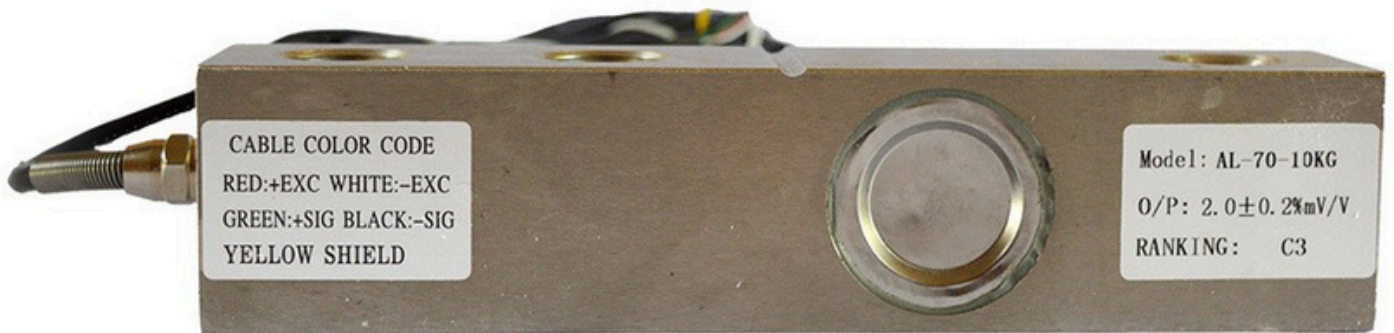




## Shear Beam Load Cell AL-70



CABLE COLOR CODE  
RED:+EXC WHITE:-EXC  
GREEN:+SIG BLACK:-SIG  
YELLOW SHIELD

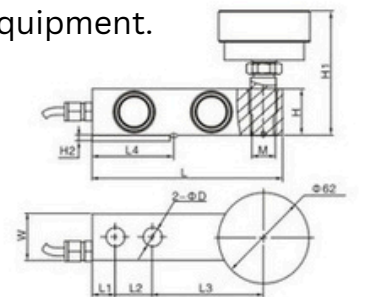
Model: AL-70-10KG  
O/P:  $2.0 \pm 0.2\% \text{mV/V}$   
RANKING: C3

### Features

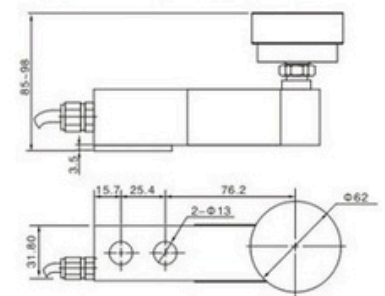
- . Nickel plated alloy steel construction
- . Low profile construction

### APPLICATIONS

Apply to ground weighter, platform scales, single-track scales, hopper weighing, metering equipment.



AL-70 (0.5t, 1t, 2t, 3t, 5t, 10t)



AL-70 (100~300kg) sealing method adopts long sealing plate

Cap (t)	L	L1	L2	L3	L4	H
0.5-3	130	15.7	25.4	76.2	52.9	31.8
5	171.5	19.1	38.1	95.3	78.9	38.1
10	225.6	25.4	50.8	124	110	50.8

Cap (t)	H1	D	M	W	H2
0.5-3	85-98	13	M12/M16	31.8	3.5
5	90-100	20	M18×1.5	38.1	5
10	110-120	26	M24×2	50.8	9

### EXTERNAL DIMENSIONS MM

# Technical Data

Rated Load	100kg,150kg,200kg,250kg,300kg,0.5t,1t,2t,3t,5t,10t
Sensitivity	2.0000±0.002mV/V
Total Error	±0.02%F.S
Creep(30minutes)	±0.02%F.S
Recommended Excitation Voltage	5V~12V(AC or DC)
Maximum Excitation Voltage	15V(AC or DC)
Zero Balance	±1%F.S
Input Impedance	380±10Ω
Output Impedance	350±5Ω
Insulation Impedance	≥5000MΩ
Safe Overload	150%F.S
Ultimate Overload	200%F.S
Operating Temperature Range	(-30~+70)°C
Compensated Temperature Range	(-20~+60)°C
Temperature Effect On Load	±0.02%F.S/10°C
Temperature Effect On Zero	±0.02%F.S/10°C
Construction	Alloy Steel
Protection Class	IP67
Citation	GB/T7551-2008/OIML R60
Mode of Connection	input+: Input+:Red
	input-: Input-:Black
	output+: Output+:Green
	output-: Output-:White