

Model A 273



Single Point Aluminum Load Cell



FEATURES

- **Rated Capacities (lb):**
100, 200, 450, 500, 1100
- **Rated Capacities (kg):**
50, 100, 200, 250, 500
- Aluminum
- IP65
- Single Point Load cell

APPLICATIONS

- Suitable for Industrial Platform Scales, Floor Scales, Dormant Scales

TECHNICAL DATA

Rated Capacities (lb):	100, 200, 450, 500, 1100
Rated Capacities (kg):	50, 100, 200, 250, 500
Rated Output	2 ± 0.1 mv/v
Combined Error	≤ ± 0.023 % FS
Non-Linearity	± 0.02 % FS
Hysteresis	± 0.02 % FS
Non-Repeatability	± 0.01 % FS
Zero Balance	± 1.00 % FS
Temperature Effect on Zero	± 0.02 % FS/ 10°C
Temperature Effect on Output	± 0.02 % FS/ 10°C
Input Resistance Ω	406 ± 6 ± 15Ω
Output Resistance Ω	350 ± 3
Insulation Resistance	≥ 5000MΩ
Excitation Voltage	5-12V
Compensated Temperature Range	-10°C ~+ 40 °C
Operating Temperature Range	-35°C ~+ 65 °C
Safe Overload	150%FS
Cable Length	3M
Applicable Platform Size For (100-1000lb / 50-500Kg)	23.6x23.6inchss / 600x600mm

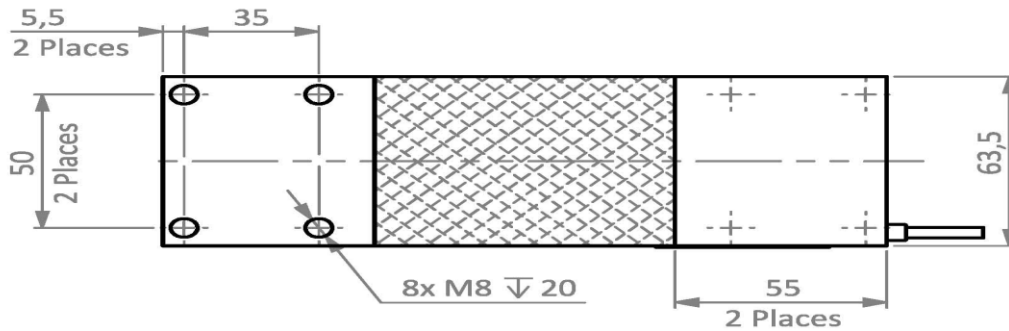
The technical data given here serve only as a product description and must not be interpreted as guaranteed characteristics in the legal sense.

Model A 273

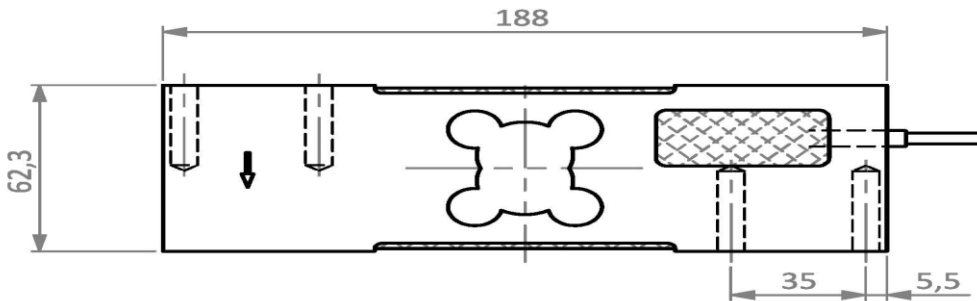
OUTLINE DIMENSIONS:



Top View



Side View



DIMENSIONS:

	A	B	C	D	E
lb/inches					
100-200	7.40	2.48	2.4	1.37	0.21
500-1000	7.40	2.48	2.4	1.37	0.21
kg/mm					
50-200	188.0	63.5	62.5	35.0	5.5
250-500	188.0	63.5	62.5	35.0	5.5

WIRING

Function	Colors
+ Excitation	Red
- Excitation	Black
+ Signal	Green
- Signal	White

Correct Mounting of Load Cells Is Essential To Ensure Optimum Performance.

3193 N, Drinkwater Blvd, P.O.Box 32662, Scottsdale, AZ 85251, U.S.A

Phone: # 480-240-1299
 Fax: # 480-240-1300
 Email: Info@themaxtechnologies.com

Max Technologies reserves the right make changes to the technology, features, specification and design of the equipment without notice.