

Model D 272

Single Point Aluminum Load Cell



FEATURES

- **Rated Capacities (lb):**
125, 200, 350, 550, 650, 1000
- **Rated Capacities (kg):**
60, 100, 150, 250, 300, 500
- Alloy Aluminum
- IP65
- Single Point Load Cell

APPLICATIONS

- Suitable for Single Point Belt Weighing, Hoppers, platforms and Packing Machines

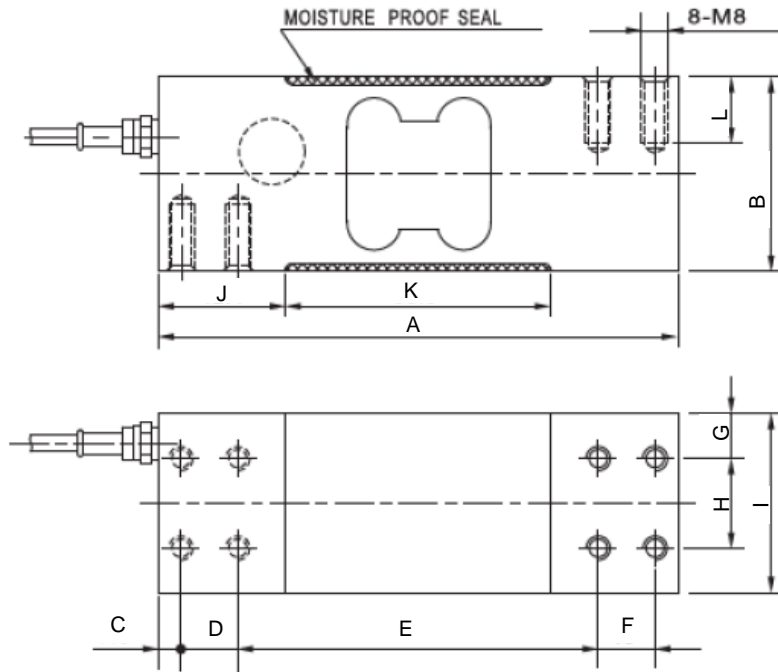
TECHNICAL DATA

Rated Capacities (lb):	125, 200, 350, 550, 650, 1000
Rated Capacities (kg):	60, 100, 150, 250, 300,500
Rated Output	2.0 ± 0.10MV/V
Non-linearity	± 0.02 % FS
Hysteresis	± 0.02 % FS
Non-Repeatability	± 0.01 % FS
Creep (30minutes)	± 0.02 % FS
Zero Balance	± 1 % FS
Temperature effect on zero	± 0.02 % FS/ 10°C
Temperature effect on output	± 0.02 % FS/ 10°C
Input Resistance Ω	410Ω ± 15Ω
Output Resistance Ω	350Ω ± 3 Ω
Insulation Resistance	≥5000MΩ
Excitation Voltage	10V (DC/AC)
Compensated Temperature Range	-10~+ 50 °C
Operating Temperature Range	-20~+ 60 °C
Safe Overload	120% FS
Maximum Applicable Platform Size	23.6x23.6inches / 600x600mm

The technical data given here serve only as a product description and must not be interpreted as guaranteed characteristics in the legal sense.

Model D 272

OUTLINE DIMENSIONS:



DIMENSIONS	A	B	C	D	E	F	G	H	I	J	K	L	M
inches	6.87	2.56	0.27	0.75	4.81	0.75	0.59	1.18	2.36	1.69	3.51	0.86	M8
mm	174.0	65.0	7.0	19.0	122.0	19.0	15.0	30.0	60.0	43.0	88.9	22.0	M8

WIRING

Function	Colors
+ Excitation	Red
- Excitation	Black
+ Signal	Green
- Signal	White
Shield	Braid

Correct Mounting of Load Cells Is Essential To Ensure Optimum Performance.

3193 N, Drinkwater Blvd, P.O.Box 32662, Scottsdale, AZ 85251, U.S.A

Phone: # 480-240-1299

Fax: # 480-240-1300

Email: Info@themaxtechnologies.com

Max Technologies reserves the right make changes to the technology, features, specification and design of the equipment without notice.