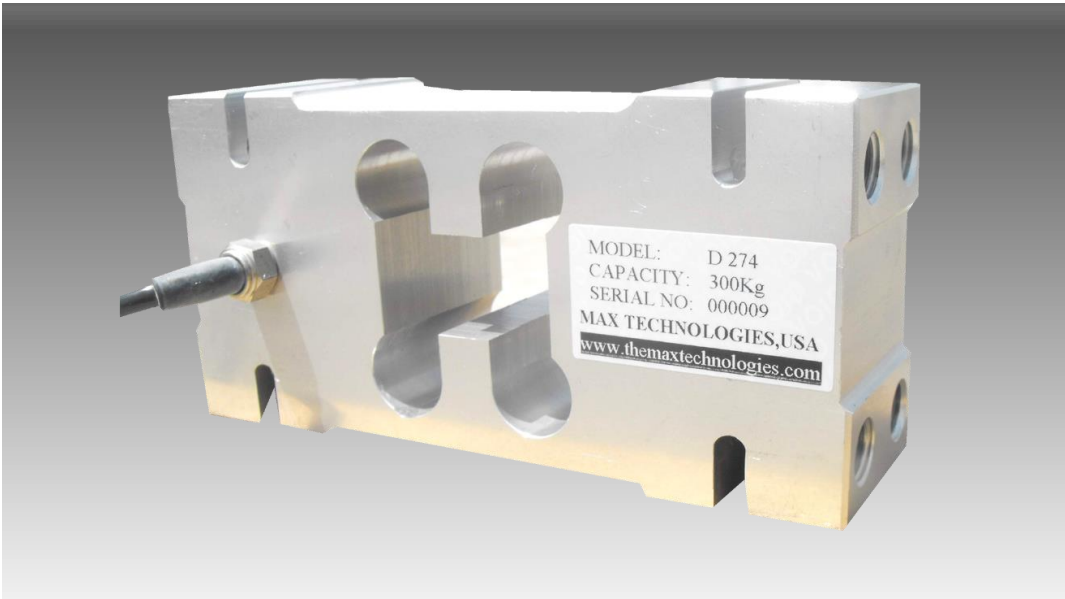


Model D 274

Single Point Aluminum Load Cell



FEATURES

- **Rated Capacities (lb):**
100, 200, 325, 450, 550, 650
- **Rated Capacities (kg):**
50, 100, 150, 200, 250, 300
- Aluminum
- IP65
- Single Point Load cell

APPLICATIONS

- Suitable for Industrial Platform Scales, Floor Scales, Dormant Scales

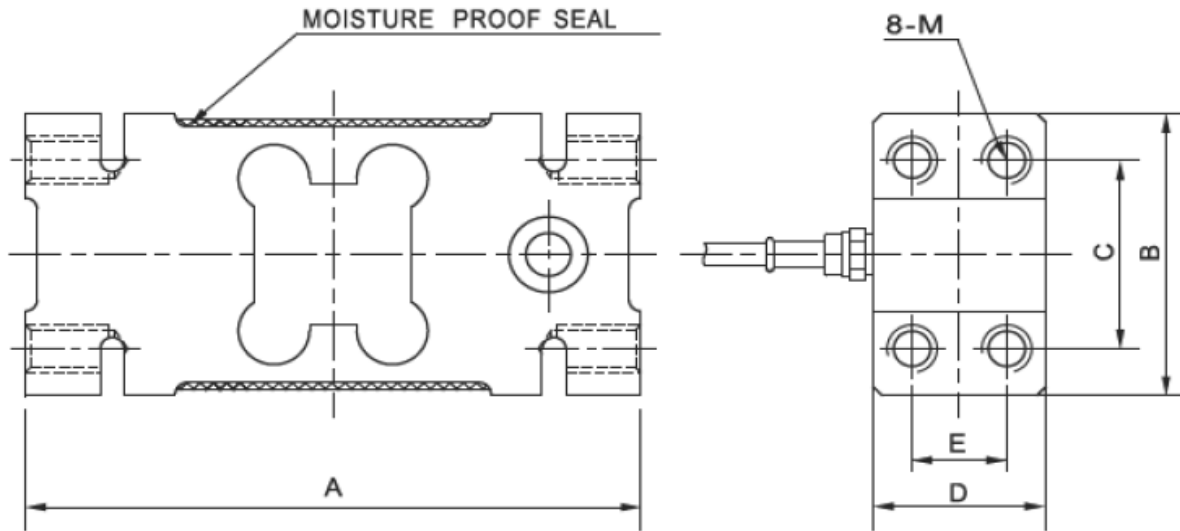
TECHNICAL DATA

Rated Capacities (lb):	100, 200, 325, 450, 550, 650
Rated Capacities (kg):	50, 100, 150, 200, 250, 300
Rated Output	2 ± 0.1 mv/v
Combined Error	≤ ± 0.023 % FS
Non-Linearity	± 0.02 % FS
Hysteresis	± 0.02 % FS
Non-Repeatability	± 0.01 % FS
Creep (30minutes)	± 0.02 % FS
Zero Balance	± 1.00 % FS
Temperature Effect on Zero	± 0.02 % FS/ 10°C
Temperature Effect on Output	± 0.02 % FS/ 10°C
Input Resistance Ω	410 ± 15Ω
Output Resistance Ω	350 ± 3
Insulation Resistance	≥5000MΩ
Excitation Voltage	10V (DC / AC)
Compensated Temperature Range	-10°C ~+ 40 °C
Operating Temperature Range	-20°C ~+ 60 °C
Safe Overload	120%FS
Cable Length	Φ0.21x10ft / Φ 5.4x3M
Applicable Platform Size For (100-650lb / 50-300Kg)	23.6x23.6inchss / 600x600mm

The technical data given here serve only as a product description and must not be interpreted as guaranteed characteristics in the legal sense.

Model D 274

OUTLINE DIMENSIONS:



DIMENSIONS:

Capacity	A	B	C	D	E	M
lb/inches						
100-650	5.76	3.75	2.76	2.36	1.42	M0.47X0.06
kg/mm						
50-300	146.0	95.0	70.0	60.0	36.0	M12X1.75

WIRING

Function	Colors
+ Excitation	Red
- Excitation	Black
+ Signal	Green
- Signal	White

Correct Mounting of Load Cells Is Essential To Ensure Optimum Performance.

3193 N, Drinkwater Blvd, P.O.Box 32662, Scottsdale, AZ 85251, U.S.A

Phone: # 480-240-1299

Fax: # 480-240-1300

Email: Info@themaxtechnologies.com

Max Technologies reserves the right to make changes to the technology, features, specification and design of the equipment without notice.