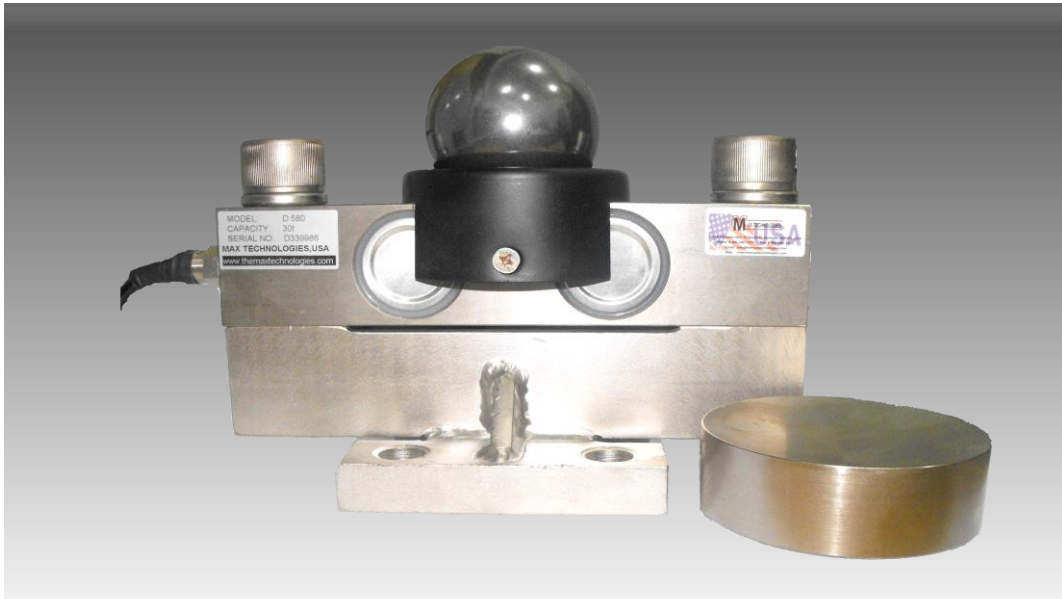


# Model D 580

Double Ended Shear Beam Load Cell



## FEATURES

- **Rated Capacities (lb):**  
20,000, 45,000, 55,000, 65,000, 85,000, 100,000
- **Rated Capacities (kg):**  
10,000, 20,000, 25,000, 30,000, 40,000, 45,000, 50,000
- Alloy Steel
- Environment IP 67,68
- High Overload Tolerance
- Electro less Nickel Plated

## APPLICATIONS

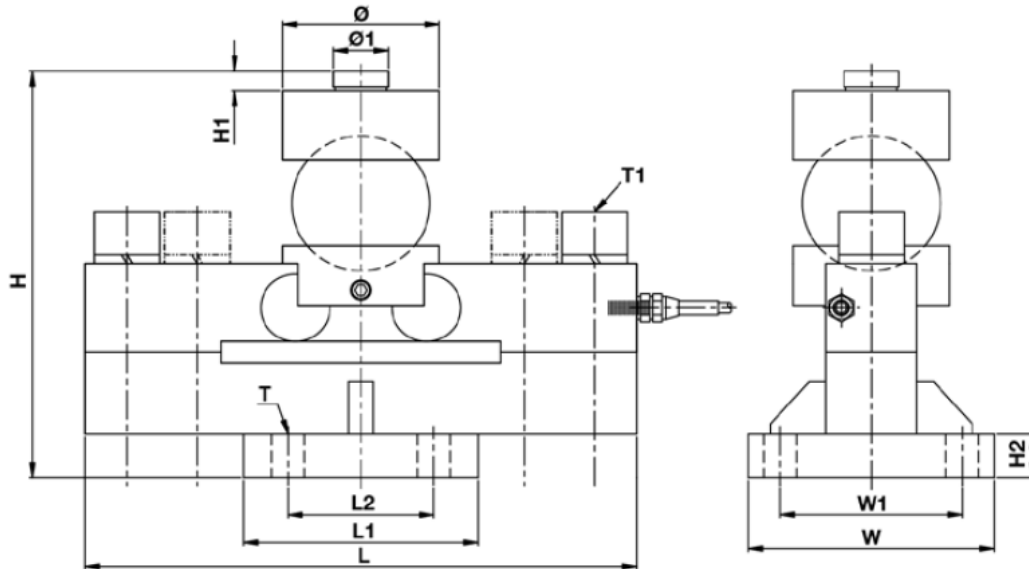
- Suitable for Truck Scales, Railroad Track Scales, Tank, Bin and Hopper Weighing

## TECHNICAL DATA

<b>Rated Capacities (lb):</b>	20,000, 45,000, 55,000, 65,000, 85,000, 100,000
<b>Rated Capacities (kg):</b>	10,000, 20,000, 25,000, 30,000, 40,000, 45,000, 50,000
Rated Output	3.0 MV/V
Combined Error	≤ ± 0.023 % FS
Non-linearity	± 0.02 % FS
Hysteresis	± 0.02 % FS
Non-Repeatability	± 0.02 % FS
Creep (30minutes)	± 0.02 % FS
Zero Balance	± 1 % FS
Temperature effect on zero	± 0.02 % FS/ 10°C
Temperature effect on output	± 0.02 % FS/ 10°C
Input Resistance Ω	770Ω ± 10Ω
Output Resistance Ω	700Ω ± 3 Ω
Insulation Resistance	≥5000MΩ
Excitation Voltage	10V (AC /DC)
Compensated Temperature Range	-10~+ 40 °C
Operating Temperature Range	-20~+ 60 °C
Safe Overload	150 % FS

# Model D 580

## OUTLINE DIMENSIONS:



## DIMENSIONS:

Capacity	L	L1	L2	H	H1	H2	Ø	Ø1	W	W1	T	T1
<b>lb/inches</b>												
20,000, 45,000, 55,000, 65,000	9.47	4.93	3.15	8.88	0.43	0.78	3.47	1.18	5.33	3.94	0.15- Ø0.71	0.07-M0.94
85,000, 100,000	13.42	6.31	4.89	10.30	0.43	0.78	3.86	1.57	6.31	4.89	0.15-0.82	0.15-M0.94
<b>kg/mm</b>												
10,000, 20,000, 25,000, 30,000,	240	125	80	225	11	20	88	30	135	100	4-Ø18	2-M24
40,000, 45,000 50,000	340	160	124	261	11	20	98	40	160	124	4-Ø21	4-M24

## WIRING

Function	Colors
+ Excitation	Red
- Excitation	Black
+ Signal	Green
- Signal	White
Shield	Braid

Correct Mounting of Load Cells Is Essential To Ensure Optimum Performance.

3193 N, Drinkwater Blvd, P.O.Box 32662, Scottsdale, AZ 85251, U.S.A

Phone: # 480-240-1299

Fax: # 480-240-1300

Email: Info@themaxtechnologies.com

Max Technologies reserves the right to make changes to the technology, features, specification and design of the equipment without notice.